



**germination** – when a seed starts to grow



**leaf**

makes food for the plant  
like a sugar factory



**stem**

support leaves

**transports** water and  
nutrients from roots

sends food down to the roots  
and rest of plant

like a motorway

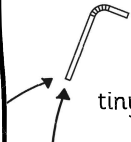


**root**

pull water up

tiny hairs absorb water

roots anchor plant to the ground



**All parts of a plant**

have specific jobs

connected to each  
other

essential for survival

**photosynthesis**

process of making food  
(inside the sugar factory)



**chlorophyll** in the leaf absorbs light  
to help make food

sunlight + water + carbon dioxide



makes sugar (glucose) + oxygen

**transpiration**

process of water moving  
upwards from  
roots

up the stem

to the leaves and  
out into the air

like a tanker driving  
up the motorway (stem)



**soil**

roots draw **water** and  
**nutrients** from soil

plants **do NOT** eat soil



helps plant **anchor**  
to the ground

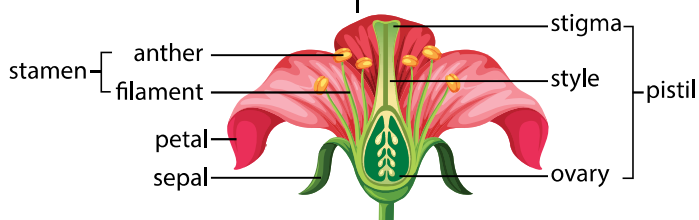


**flower**

purpose is to **attract insects**

cause **pollination**

to make **seeds**



**pollination**

The **transfer** of **pollen** to create **seeds** so a  
plant can **reproduce**.

